

## La main à la pâte Foundation in 2014

The *La main à la pâte* Foundation proposes various teaching aids for primary and secondary school teachers, within and outside France, in order to teach an active and attractive science. Launched in 1995 by the Académie des sciences on the initiative of Georges Charpak (Nobel Prize in Physics), *La main à la pâte* became a Foundation in 2011 created by the Académie des sciences, the École Normale Supérieure (Paris) and the École Normale Supérieure (Lyon).



Over the last year, the *La main à la pâte* Foundation has continued to work closely with its grassroots actors to innovate and encourage science and technology education in order to benefit primary and middle school students. Three new *Maisons pour la science* have been made available to teachers, hosted by the universities: Lille 1 (Nord-Pas-de-Calais), Orléans (Centre-Val de Loire) and Rennes 1 (Bretagne), and coordinated by the Foundation. Inaugurated at the beginning of the 2014 school year, they offer professional development courses in sciences, co-constructed by scientists and educators, to the teachers of their region.

In the same spirit, over 20 actions of **professional development** aimed at educators have been organised by the Foundation in partnership with companies (Saint-Gobain, AMGEN...), and other scientific organizations, both French (INRA, INRIA, CEA, IPGP...) and European (CERN, ESA...).

In 2014, the theme of transport and ecomobility was given pride of place in a teaching guide aimed at primary and middle school teachers, created with the financial support of SNCF, ADEME and Casden.

**Teaching resources** dedicated to special needs children were also put into action this year, in the framework of the Science & Handicap program.

To reinforce **equal opportunities** for children, the national network of pilot centers, places for the sharing of knowledge and resources with teachers and their classes, coordinated by *La main à la pâte*, has continued to grow. The number of middle schools who have opened classes integrating both science and technology (EIST) has increased, as well as the number of science and technology classes accompanied by tertiary science students (primary school teacher-assistant program, ASTEP). National seminars conjointly organised with the Ministry of Education, Higher Education and Research, have facilitated fruitful exchanges within these networks.

The participation of the **education, research and industry communities** has been made concrete, not only through teaching resources and training programs but also by a conference bringing together the directors of the *Maisons pour la science* and ESPE (Teacher's college), enabling the discussion of promising paths for future collaboration.

Finally, this year's **international action** has seen the launch of a new European project called SUSTAIN. It focuses on sustainable development education. Regarding non-European countries, the 5th week-long international seminar was successfully held in June, with the participation of representatives from 35 countries.

# Key figures

## for the school year 2013-2014



**5,400** primary and middle school **TEACHERS AND EDUCATORS** participated in a course at one of the **7 MAISONS POUR LA SCIENCE** throughout the French regions



**2,600** PRIMARY SCHOOL SCIENCE CLASSES benefited from a teacher-assistant program during the year

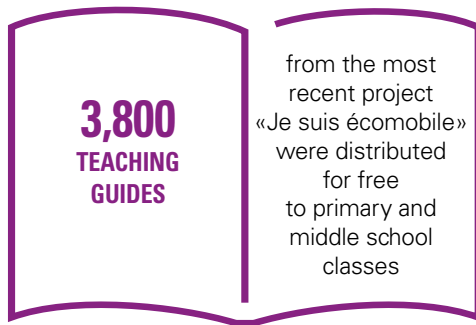
**350,000** VISITS per month

to the Foundation's website proposing teaching resources for teachers and educators



**184** MIDDLE SCHOOLS

led integrative science and technology teaching programs (more than a dozen overseas French establishments)



**21** PILOT CENTERS, ensuring equal opportunities for children

Almost

**8,000** CLASSES

benefited from the help of one of *La main à la pâte's*

**21** PILOT CENTERS, ensuring equal opportunities for children

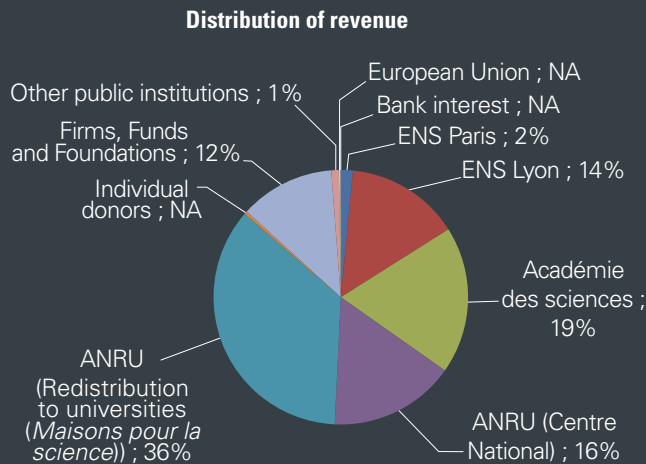
## Financial and human resource review

A national team of 26 people and 8 volunteers specialised in education and science

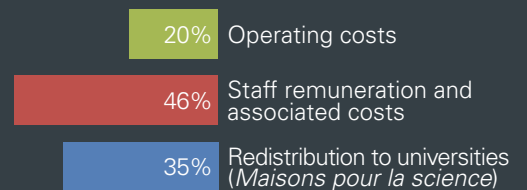
Total revenue reached 3.06 million euros, a slight decrease compared to 2013.

Rigorous management resulted in a fiscal surplus of 98 K€.

In accordance with Article 11 of its statute, the Foundation continues constituting its one million euro endowment fund (non-expendable). In 2014, this fund has reached 769 231 € and will reach 1M€ in the next fiscal year.



### Distribution of expenses



INSTITUT DE FRANCE  
Académie des sciences



[www.fondation-lamap.org/en/international](http://www.fondation-lamap.org/en/international)

Fondation *La main à la pâte* - 43 rue de Rennes - 75006 Paris - FRANCE - tel : +33 185 08 71 79 - [contact@fondation-lamap.org](mailto:contact@fondation-lamap.org)